



Kunstleder





646-1335



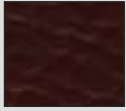
646-0194



646-0187



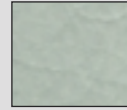
646-0192



646-0188



Canasta 646-0191



646-1452



646-0197



646-0198

Canasta

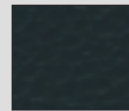
Candela



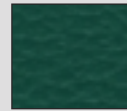
Candela 646-1241



646-1423



646-1401



646-1469



646-1243



646-1468



646-1183



646-1461



646-1460



646-0266



646-0301



646-0269



646-0270



Bresta 646-0268



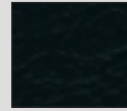
646-1334



646-1190



646-1189



646-0267

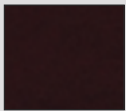
Bresta



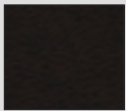
641-1263



641-0176



641-0185



641-0436



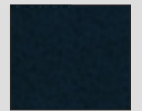
Flor 66 641-0183



641-0332



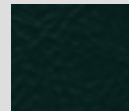
641-0187



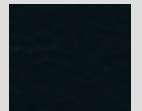
641-1262



641-0352



641-0177

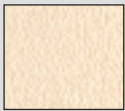


641-0279

Flor 66



646-1198



646-1636



646-1210



Tundra 646-1607



646-1288



646-1608



646-1205



646-1637



646-1457



646-1458



646-1495



646-1609



646-1496



646-1343



646-1542



646-1556



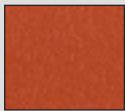
646-1456



646-1338



646-1273



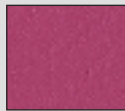
646-1557



646-1454



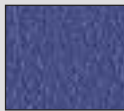
646-1199



646-1381



646-1354



646-1356



646-1453



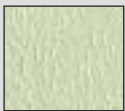
646-1581



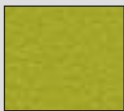
646-1455



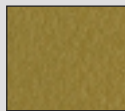
646-1230



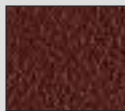
646-1610



646-1543



646-1638



646-1350



646-1357



646-1204



646-1196



646-1197



646-1195



646-1550

Tundra



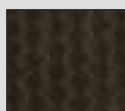
646-1605



646-1603



646-1604



646-1606



646-1566



646-1565



646-1564



646-1497



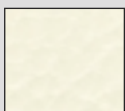
646-1568



646-1567

Tundra/Techno

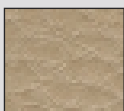
Sotega



507-0646



507-0645



507-1090



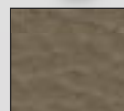
Sotega 507-0636



507-0911



507-0767



507-1091



507-1015



507-0635



507-1056



507-1019



507-0694



507-1020



507-0909



507-0647



507-0693



507-1016



507-1017



507-1021



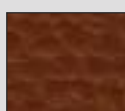
507-0637



507-0910



507-0639



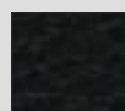
507-0644



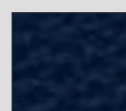
507-0640



507-0641



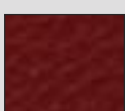
507-0679



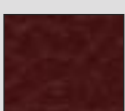
507-0823



507-0642



507-0680



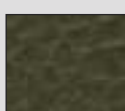
507-0638



507-0677



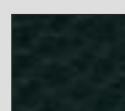
507-0912



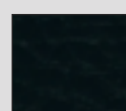
507-0835



507-0763



507-0676



507-0643



507-0728



507-0730



Sorentiko 507-0727



507-0731



507-0729

Sorentiko



632-1225



632-1228

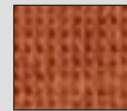


632-1224

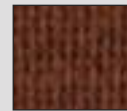
Arilano



Arilano 632-1227



632-1243



632-1226



632-1223



507-5016



507-5017



507-5023



507-5018



507-5019



Sarano 507-5020



507-5021



507-5022

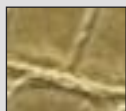
Sarano



507-1061



507-1035



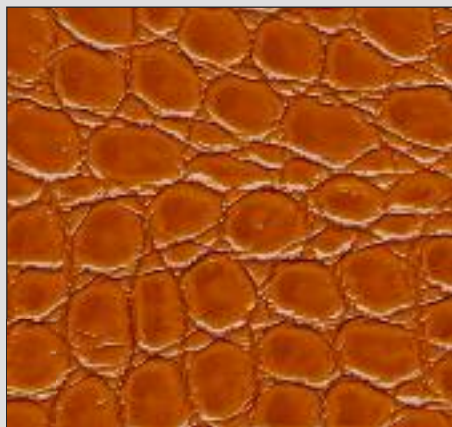
507-1095



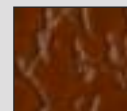
507-0978



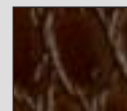
507-1096



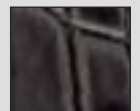
Socodilo Flash 507-0907



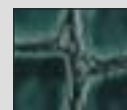
507-0904



507-0906



507-1097



507-1033



507-0905

Socodilo Flash



641-1083



641-1084



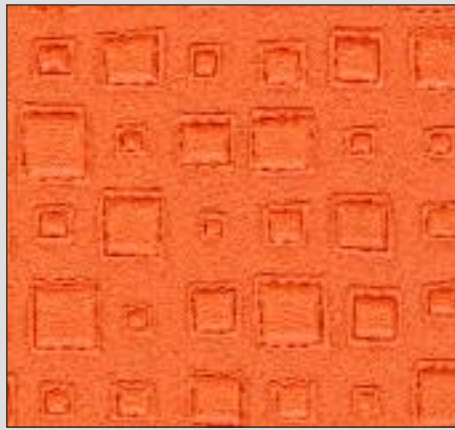
641-1086



641-1088



641-1085



Parona NF 641-1087



641-1091



641-1090



641-1089



641-1092



Parona NF



507-0996



507-0795



507-0794



507-0958



507-0957



507-0956



507-0792



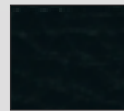
Sotega FLS 507-0955



507-0793



507-1057



507-0796



507-0791



Sotega FLS



507-1790



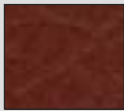
507-1789



507-1783



507-1784



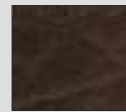
507-1786



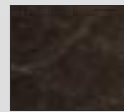
Sontario FLS 507-1787



507-1785



507-1788



507-1781

Sontario FLS



641-0955



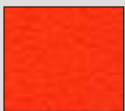
641-0952



641-0851



641-1004



641-0985



641-1054



641-0931



641-0871



641-0852



641-0779



Plata 641-0777



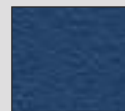
641-1015



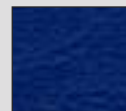
641-0878



641-0932



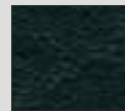
641-1020



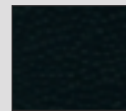
641-0933



641-0869



641-0812



641-0811

Plata





507-0929



507-0923



507-0920



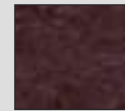
507-0924



507-0925



Soliena FLS 507-0922



507-0926



507-0921

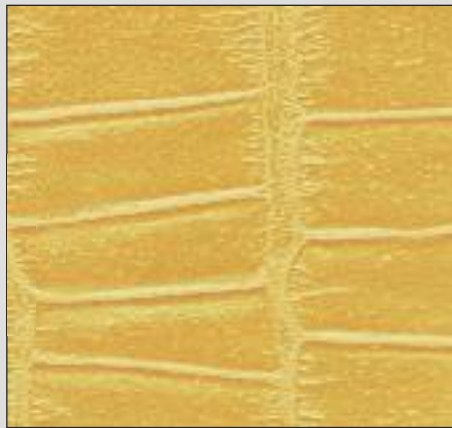


507-0930

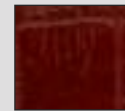
Soliena FLS



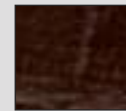
507-0932



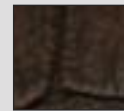
Somosa FLS 507-0931



507-0933



507-1063



507-0934

Somosa FLS



507-0938



507-0939



507-0937



Sopythana FLS 507-0935

Sopythana FLS



646-1588



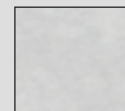
646-1633



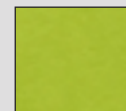
646-1589



Palena 646-1628



646-1627



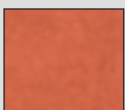
646-1629



646-1596



646-1584



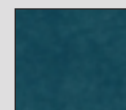
646-1586



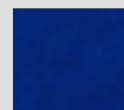
646-1590



646-1595



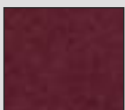
646-1585



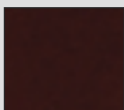
646-1597



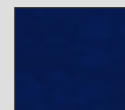
646-1593



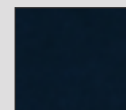
646-1634



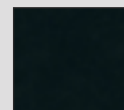
646-1594



646-1591

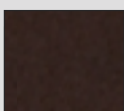


646-1592



646-1587

Palena



646-1635

Kollektionsmuster sind keine Urmuster. Kleine Farbabweichungen sind möglich.
Swatches are no master samples. Small differences may occur.



646-1611



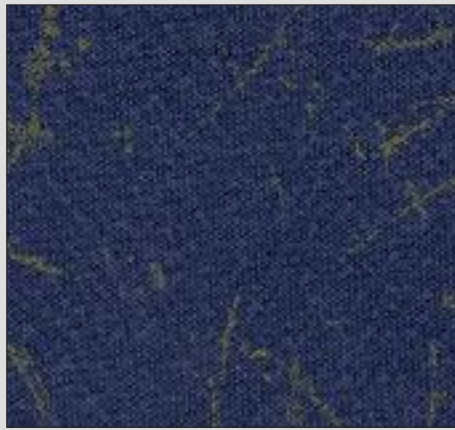
646-1548



646-1599



646-1547



Paradino NF Cosmo 646-1545



646-1546



646-1544

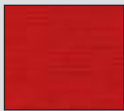
Paradino NF Cosmo



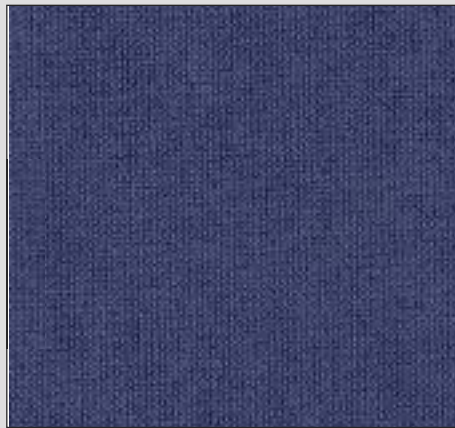
646-1535



646-1524



646-1528



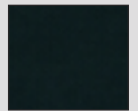
Paradino 646-1531



646-1532



646-1533



646-1527

Paradino



641-1041



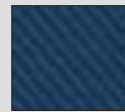
641-1039



641-1046



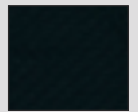
Palatexo 641-1047



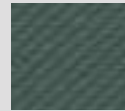
641-1040



641-1045



641-1049



641-1042

Palma



641-0907



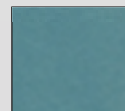
641-0702



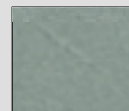
641-0703



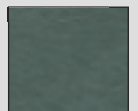
Palma 641-0714



641-1059



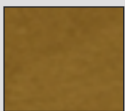
641-1061



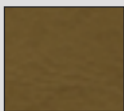
641-0713



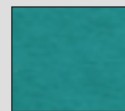
641-0983



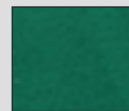
641-0709



641-0705



641-0926



641-0984



641-0715



641-1060



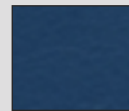
641-0710



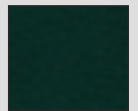
641-0929



641-0925



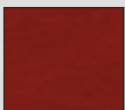
641-1053



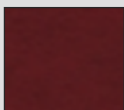
641-0716



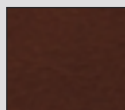
641-0994



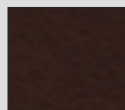
641-0711



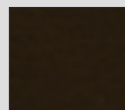
641-0927



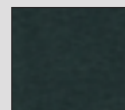
641-0706



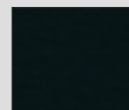
641-0707



641-0708



641-1062



641-0701



Neptun-Ravenna 649-4015



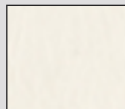
Neptun-Pescara 649-4017



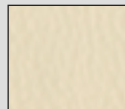
Neptun-Imperia 649-4016



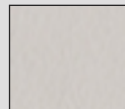
Neptun-Varezzo 649-4014



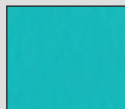
649-4003



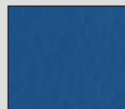
649-4004



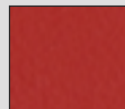
649-4005



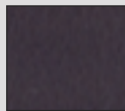
649-4006



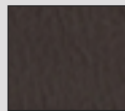
649-4011



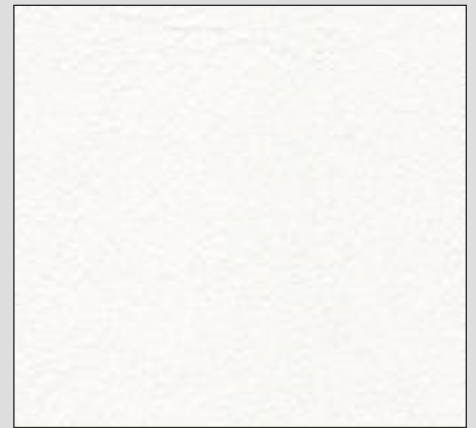
649-4009



649-4012



649-4013




Neptun-Calero 649-4002

Neptun 



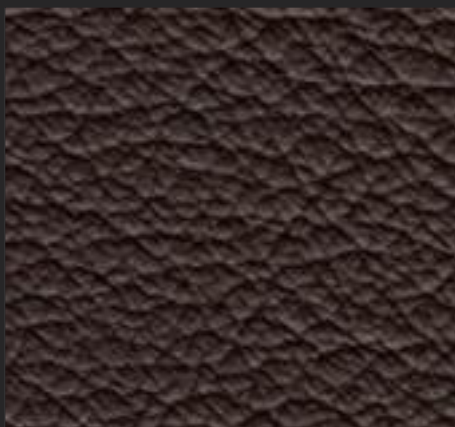
Mano-S 646-1486

Mano-S  electrically conductive



BASIS 

Kollektionsmuster sind keine Urmuster. Kleine Farbabweichungen sind möglich.
Swatches are no master samples. Small differences may occur.



Basis K1113



K1138



K1103



K1338



K1137



K1146



K1398



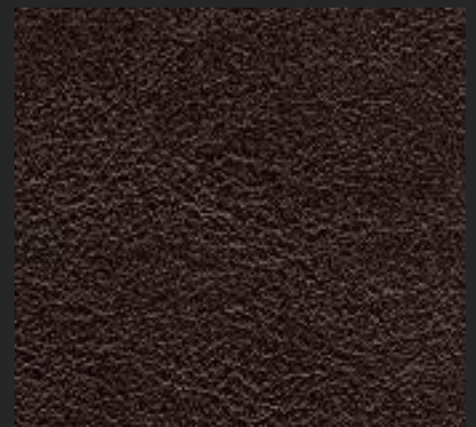
K1120



K1116

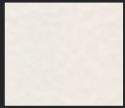


K1115



Basis K1351

KINGDOM



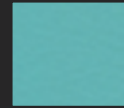
K5001



K5002



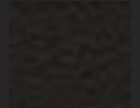
Queen K5003



K5004



K5005



K5006

Queen

phthalatfrei/
free of phthalat



K2750



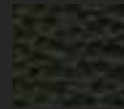
K2751



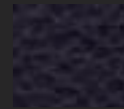
K2752



Prince K2753



K2757



K2758



K2759



K2755



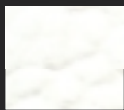
K2756



K2754

Prince

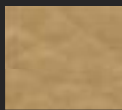
Lord



K4001



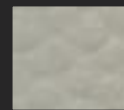
K4002



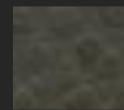
K4003



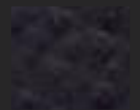
Lord K4004



K4008



K4009



K4011



K4012



K4013



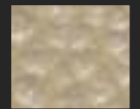
K4010



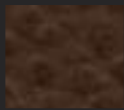
K4015



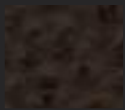
K4017



K4018



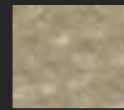
K4005



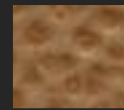
K4006



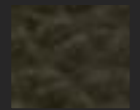
K4007



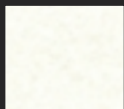
K4019



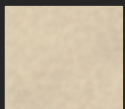
K4020



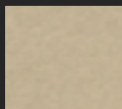
K4014



K3001



K3002



K3003



Princess K3004



K3021



K3022



K3023



K3005



K3006



K3007



K3016



K3019



K3018



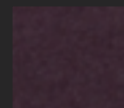
K3008



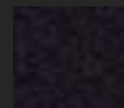
K3012



K3013



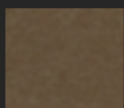
K3015



K3017



K3020



K3009



K3010



K3014



K3011

Princess



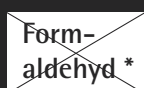
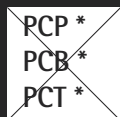
Kollektionsmuster sind keine Urmuster. Kleine Farbabweichungen sind möglich.
Swatches are no master samples. Small differences may occur.

Spezifikationen/*Specifications*

Artikel	Wasserdampf durchlässig <i>steam permeable</i>	Salzwasserbeständig <i>seawater-resistant</i>	ölbeständig <i>oilresistant</i>	Desinfektionsmittelbeständig <i>disinfectant constant</i>	Urin- und Blutbeständig <i>resistant to urine and blood</i>	phthalatfrei <i>free of phthalat</i>	Stärke <i>thickness</i> in mm	Gewicht <i>weight</i> in g/m ²	Rollenbreite <i>width</i> in cm	Rollenlänge <i>length</i> in m
Arilano							1,6	640	150	30
Basis							1,3	740	140	25/30
Bresta				X*	X		1,05	630	137	30
Canasta				X*	X		1,05	630	137	30
Candela				X*	X		1,1	630	137	30
Flor 66				X*	X		1,3	765	137	30
Lord				X*			1,4	750	140	25
Mano-S				X*			1,0	650	137	30
Neptun		X	X	X*			1,0-1,7	860	140	30
Palatexo				X*	X		1,45	920	137	30
Palena				X*			1,3	700	137	30
Palma	X			X*	X		1,3	825	137	30
Paradino				X*	X		1,25	630	137	30
Paradino Cosmo				X*	X		1,25	700	137	30
Parona NF							1,45	830	137	30
Plata				X*			1,35	800	137	30
Prince				X*			1,4	515	142	30
Princess				X*			1,2	610	140	25
Queen			X	X*		X	1,2	650	140	25
Sarano	X						1,3	610	150	30
Socodilo Flash							1,8	810	150	30
Soliena FLS							1,6	740	150	30
Somosa FLS							1,6	740	150	30
Sontario FLS	X						1,6	740	150	30
Sopythana FLS							1,6	740	150	30
Sorentiko							1,4	740	150	30
Sotega	X			X*			1,7	780	150	30
Sotega FLS	X			X*			1,6	780	150	30
Tundra				X*	X		1,0	680	137	30
Tundra/Techno				X*			0,8-2,0	680	137	30

* Geprüfte Desinfektionsmittel: siehe Datenblätter

* *Tested disinfecting agents: see datasheets*



* nach den gesetzlichen Bestimmungen
* *prescribed by law*



Brandschutznormen/*Low Flammability tests*

Artikel	Deutschland DIN 4102 Part 1 (B2) DIN 53438	Frankreich NF-P 92-503 NF M1	Frankreich NF-P 92-503 NF M2	Österreich ÖNORM B3825	Europa EN 1021-1+2	Schiffe IMO FTPC P8	Großbritannien BS 5852-IS 0+1	MVSS 302 ISO 3795 DIN 75200	Italien Classe Uno (IM)
Arilano									
Basis								X	
Bresta									
Canasta									
Candela									
Flor 66									
Lord	X				X		X		X
Mano-S									
Neptun					X	X	X		
Palatexo	X		X	X	X		X	X	X
Palena	X		X	X	X		X	X	X
Palma	X		X	X	X		X	X	X
Paradino	X		X	X	X		X	X	X
Paradino Cosmo	X	X		X	X		X	X	X
Parona NF	X	X		X	X		X	X	X
Plata	X		X	X	X		X	X	X
Prince									
Princess	X				X		X		X
Queen								X	
Sarano					X				
Socodilo Flash									
Soliena FLS	X		X	X	X		X	X	
Somosa FLS	X		X	X	X		X	X	
Sontario FLS	X		X	X	X		X	X	
Sopythana FLS	X		X	X	X		X	X	
Sorentiko									
Sotega									
Sotega FLS	X		X	X	X		X	X	
Tundra									
Tundra/Techno									

Verarbeitung: Problemlose Verarbeitung nach allen in der Polsterindustrie üblichen Verfahren (Nähen, Heften, Kleben, Nageln, HF-Schweißen). Keine lösungsmittelhaltigen Kleber einsetzen.

Reinigung: Bei normaler Verschmutzung einfach mit einem feuchten Tuch abwischen. Besonders empfehlenswert ist die Verwendung eines handelsüblichen Mikrofasertuches. Starke Verschmutzung mit der Lauge eines handelsüblichen Feinwaschmittels entfernen.

Processing: Trouble-free handling in usual upholstery-industry processes (sewing, tacking, gluing, nailing, HF-welding). No solvent adhesives to be used.

Cleaning: Soiled areas can be cleaned with a damp cloth. Particularly recommended is the use of a commercially available microfibre cloth. Stubborn stains require treatment with a commercial mild action detergent.



Hans Reinke Handelsgesellschaft mbH

Brandstücken 20 · 22549 Hamburg
Telefon +49 (0)40/39 10 68 - 0 · Fax +49 (0)40/39 10 68 - 29

E-Mail: info@hans-reinke.com · <http://www.hans-reinke.com>